

环保农药水悬浮剂一体化成套设备

SC formulation plant milling & mixing system

产品概述

此型式的分散盘在槽孔和多轮廓的作用下，使研磨介质的球体产生强烈的碰撞和摩擦，使物料得到高效率的研磨分散。

该机采用经优化设计的机械密封，具有可靠性和耐用性，并配有与研磨物料相容性的冷却液，减少对研磨物料污染。

适用于农药、涂料、油漆、油墨等行业的物料研磨，能将物料颗粒的聚体化，通过强力的研磨短时间内达到要求的细度。操作简单，可靠性好，生产效率高，能满足用户的需要。

工作原理

待研磨的产品通过输送泵进入磨腔，通过磨腔内分散盘槽孔及多轮廓盘型，使浆料与研磨介质产生强烈的碰撞与摩擦，使物料得到高效率的研磨分散。经研磨分散后的浆料通过动态分离筛出料。

特点

- 超级效率：结合公司多年在研磨领域的经验，优化设计的分散盘，最大程度将能量转移到研磨介质上，通过强力研磨迅速达到所需的细度。操作简单，可靠性好，生产效率高。

- 采用了先进的动态分离技术，可实现研磨介质与浆料有效分离。该项技术使得该设备可采用极其细小的研磨介质（ $\Phi 0.5\text{mm} \sim \Phi 1.4\text{mm}$ ），填珠个数可几何程度增长，特殊设计的合金分离设备使用寿命长，几乎无需维护。

- 优化设计的机械密封：作为《砂磨机、珠磨机机械密封技术条件》的制定单位，为这台砂磨机配置了经过优化设计的机械密封，具备了高可靠性与耐磨性，并可采用与研磨物料相容的冷却液，杜绝研磨物料污染。

型号 Model	MYM15A	MYM20A	MYM30A	MYM48A	MYM60A
筒体容积 Tank capacity L	15	20	30	48	60
电机功率 Motor power KW	11	18.5	22	37	45
产量范围 kg/h Production capacity	30~200	40~300	50~600	100~1000	150~1200
研磨细度 Fines μ	2~20				
输送泵型式 Pump type	隔膜泵/齿轮泵 Diaphragm pump/Gear pump				

Product introduction:

The type dispersing disk is functioned by the slot hole and multiplied profiles to produce the strong bump and friction among mediate ball bodies. Therefore, the material can be ground and dispersed in high efficiency.

The machine adopts the dual end surface mechanical sealing with reliability and durability, mated with the coolant compatible to the ground material in order to reduce the pollution of ground material, suitable to grind the materials in coating, oil painting printing ink and pesticide industries. It makes the material into aggressiveness and give the strong grind so that the grains reaches the required fineness in short time. The machine is easily operated with reliability and high production efficiency. Depending on different requirements, the different models of machines can satisfy with customers.

PRINCIPLE

The raw grinding material enters into the grinding chamber through the transfer pump. This type dispersing disk is functioned by the slot hole and multiplied profiles to produce the strong bump and friction between the material and grinding media. It can make material getting high-efficient abrasive scattered, the slurry, after grinding, the scattered slurry will go out through dynamic separation screen.

FEATURES

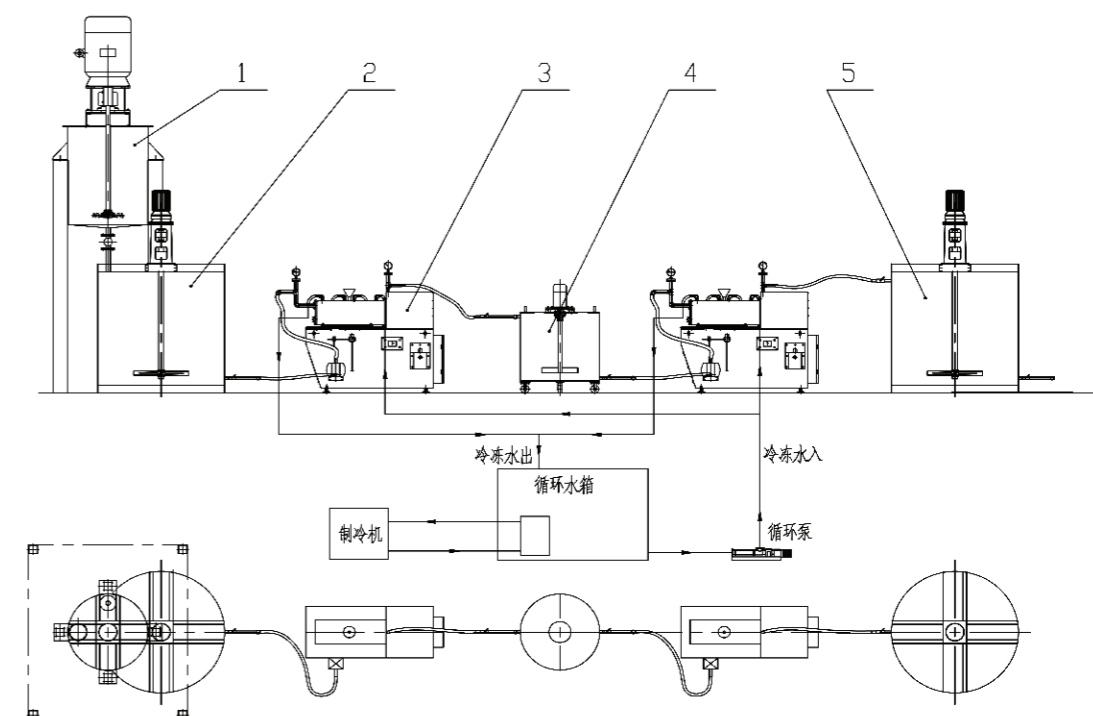
Super efficiency: combined with years of experience in the field of the grinding, the dispersed disk has been optimized designed, can transfer most of energy onto grinding media; can get required fineness rapidly through powerful grinding. Simplicity of operation, good reliability and high efficiency. Adopted advanced dynamic separation technology, Grinding media and slurry can be separated from each other effectively. this technology make that the equipment can use very fine grinding medium ($\Phi 0.5\text{mm} \sim \Phi 1.4\text{mm}$), Filling bead number can increase by geometry multiples, the alloy separation equipment has long service life because of its special design, almost does not need any maintenance.

Optimization design of mechanical seal: As formulation of the unit" the sand milling machine, bead grinding machine mechanical seal technology conditions ", we equipped with optimized design of mechanical seal for this one sanding machines, it has high reliability and wear resistance, it also can use cooling fluid, which is compatible with grinding materials, to prevent the pollution of grinding materials.

A: 环保农药水悬浮剂一体化成套设备流程图
SC formulation plant layout



B. 简易型农药水悬浮剂一体化生产线
Simple production line



- 1、预分散罐
- 2、原料罐
- 3、砂磨机
- 4、过滤罐
- 5、成品储存罐

- 1、Pre-dispersion Tank
- 2、Raw material Tank
- 3、Sand Mill
- 4、Transition Tank
- 5、Finished Product Tank